

Pursue an International Degree at  
**Brandenburg University of  
Technology**

GATE Marketing Webinar USA – April 5, 2017

# OUTLINE

01 • BTU Cottbus–Senftenberg

02 • Study courses offered

03 • Why study at BTU?

04 • Application and admission process

05 • Your city – Information about Cottbus

06 • Your campus

07 • Your student experience

08 • Important information



- Founded in 2013
- 3 campuses
- 6 faculties
- More than 70 study programs  
(12 only taught in English)
- Combines outstanding  
international research with  
future-oriented teaching



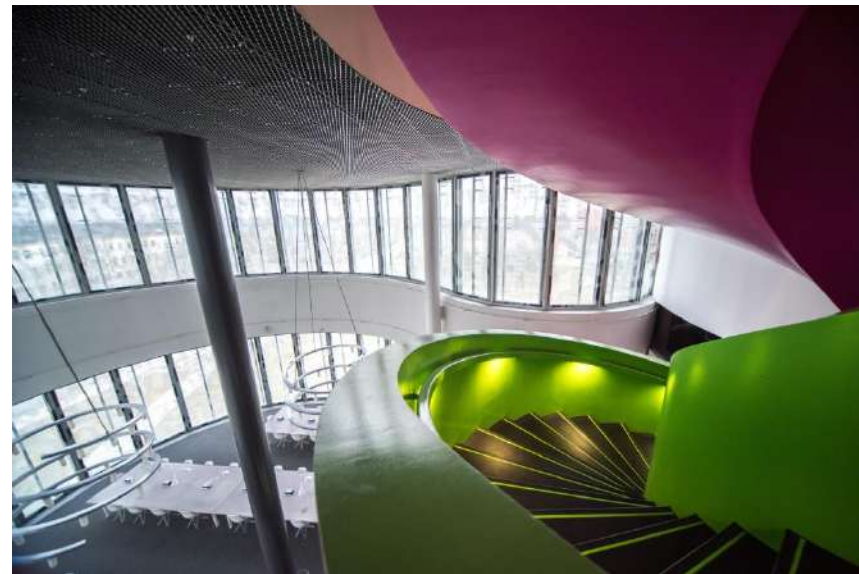




Information,  
communication and  
media center (ICMC)

Main campus Cottbus





# MAIN FOCUS AREAS

BUILT ENVIRONMENT • HEALTH, SOCIAL, MUSIC PEDAGOGY • CULTURAL  
SCIENCES • ENGINEERING SCIENCES • ENVIRONMENTAL SCIENCES •  
BUSINESS SCIENCES • MATHEMATICS, NATURAL AND COMPUTER SCIENCES



RESEARCH-ORIENTED STUDY PROGRAMS



APPLIED STUDY PROGRAMS

## FACULTY 1

Mathematics, Computer Science,  
Physics, Electrical Engineering  
and Information Technology

## FACULTY 2

Environment and Natural  
Sciences

## FACULTY 3

Mechanical Engineering,  
Electrical and Energy Systems

## FACULTY 4

Social Work, Health Care and  
Music

## FACULTY 5

Business, Law and Social  
Sciences

## FACULTY 6

Architecture, Civil Engineering  
and Urban Planning

# STUDY PROGRAMS

## BUILT ENVIRONMENT

Language



Architecture	Ger · Pl	B.Sc. · M.Sc.	
Building and Conservation	Ger	M.Sc.	
Civil Engineering	Ger	B.Sc. · M.Sc.	
Heritage Conservation and Site Management	En	M.A.	
Heritage Studies	En	Ph.D.	
Climate-adapted Construction and Operation	Ger		M.Eng.
Urban and Regional Planning	Ger	B.Sc. · M.Sc.	
Urban Design - Revitalization of Historic City Districts	En	M.Sc.	
World Heritage Studies	En	M.A.	

# STUDY PROGRAMS

## HEALTH · SOCIAL MUSIC PEDOGOGY

Language



Vocational Education in Healthcare Professions	Ger	M.A.	
Therapy Sciences*	Ger		B.Sc.
Nursing Science*	Ger		B.Sc.
Social Work	Ger·Pl·Ro		B.A. · M.A.
Instrumental and Vocal Performance and Teaching	Ger		B.A.

## CULTURAL SCIENCE

Language



Culture and Technology	Ger	B.A. · M.A.	
------------------------	-----	-------------	--



# STUDY PROGRAMS

## ENGINEERING SCIENCE

Language



Electrical Engineering*	Ger	B.Sc. · M.Sc.	B.Eng.* · M.Eng
Mechanical Engineering*	Ger	B.Sc. · M.Sc.	B.Eng.* · M.Eng
Power Engineering	En	M.Sc.	
Technology of Biogenic Raw Materials	Ger	B.Sc.	
Processing Technologies of Materials	Ger · Ru	M.Sc.	
Process Technology	Ger	B.Sc.	
Process Technology - Process and Plant Technology	Ger	M.Sc.	
Business Administration and Engineering*	Ger	B.Sc. · M.Sc.	B.Eng.* · M.Eng

# STUDY PROGRAMS

## ENVIRONMENT SCIENCES

Language



Environmental and Resource Management	En	B.Sc. · M.Sc.	
Euro Hydro-Informatics and Water Management	En	M.Sc.	
Forensic Sciences and Engineering	Ger · En	M.Sc.	
Land Use and Water Management	Ger	B.Sc. · M.Sc.	
Renewable Raw Materials and Regenerative Energy	Ger	M.Sc.	
Environmental Engineering	Ger	B.Sc. · M.Sc.	

## BUSINESS SCIENCES

Language



Business Administration	Ger	B.Sc. · M.Sc.	B.Sc.
Business Law for Technology Companies	Ger	M.B.L.	

# STUDY PROGRAMS

## MATHEMATICS NATURAL SCIENCES COMPUTER SCIENCE

Language



Applied Chemistry	Ger		B.Sc. · M.Sc.
Applied Mathematics	Ger	M.Sc.	
Biotechnology	Ger · En		B.Sc. · M.Sc.
Dependable Systems	En	Ph.D.	
eBusiness	Ger	B.Sc. · M.Sc.	
Computer Science	Ger	B.Sc. · M.Sc.	M.Sc.
Information and Media Technology	Ger	B.Sc. · M.Sc.	
Mathematics	Ger	B.Sc.	
Medical Informatics*	Ger	B.Sc.	
Physics	Ger · Pl	B.Sc. · M.Sc.	
Economathematics	Ger	B.Sc.	



- **Program Objective:**

To equip graduates with the skills needed to design, implement and manage cyber security concepts

- **Career Opportunities:**

- IT-industry
- State organizations and administrations, military, large companies, small and medium-sized enterprises, data centers and news services
- Cyber security research



# ENVIRONMENTAL AND RESOURCE MANAGEMENT (B.SC., M.SC., PH.D.)

- **Program Objective:**

To offer an integrated approach to current international issues, thus helping to improve the quality of professional environmental management for the 21<sup>st</sup> century

- **Career Opportunities:**

- Public sector: environmental administrations, organizations of the European Union and the United Nations and supervising agencies
- Private sector: engineering and planning enterprises, energy production companies



- **Program Objective:**

To convey transdisciplinary knowledge needed for the identification, preservation, management and presentation of cultural and natural heritage sites

- **Career Opportunities:**

- Heritage institutions, governmental bodies, private organizations, tourism, museums and universities
- UNESCO offices and National Commissions, World Heritage sites and other country specific cultural organizations





- **Program Objective:**

To develop the concept of a safe, affordable and environmentally friendly energy generation as one of most urgent global challenges of the 21<sup>st</sup> century

- **Career Opportunities:**

- Academic and industrial research and development, power generation, transmission, distribution and application
- Design, manufacturing and sales of technical products
- Work as engineers or managers in the power industry and supply utilities field



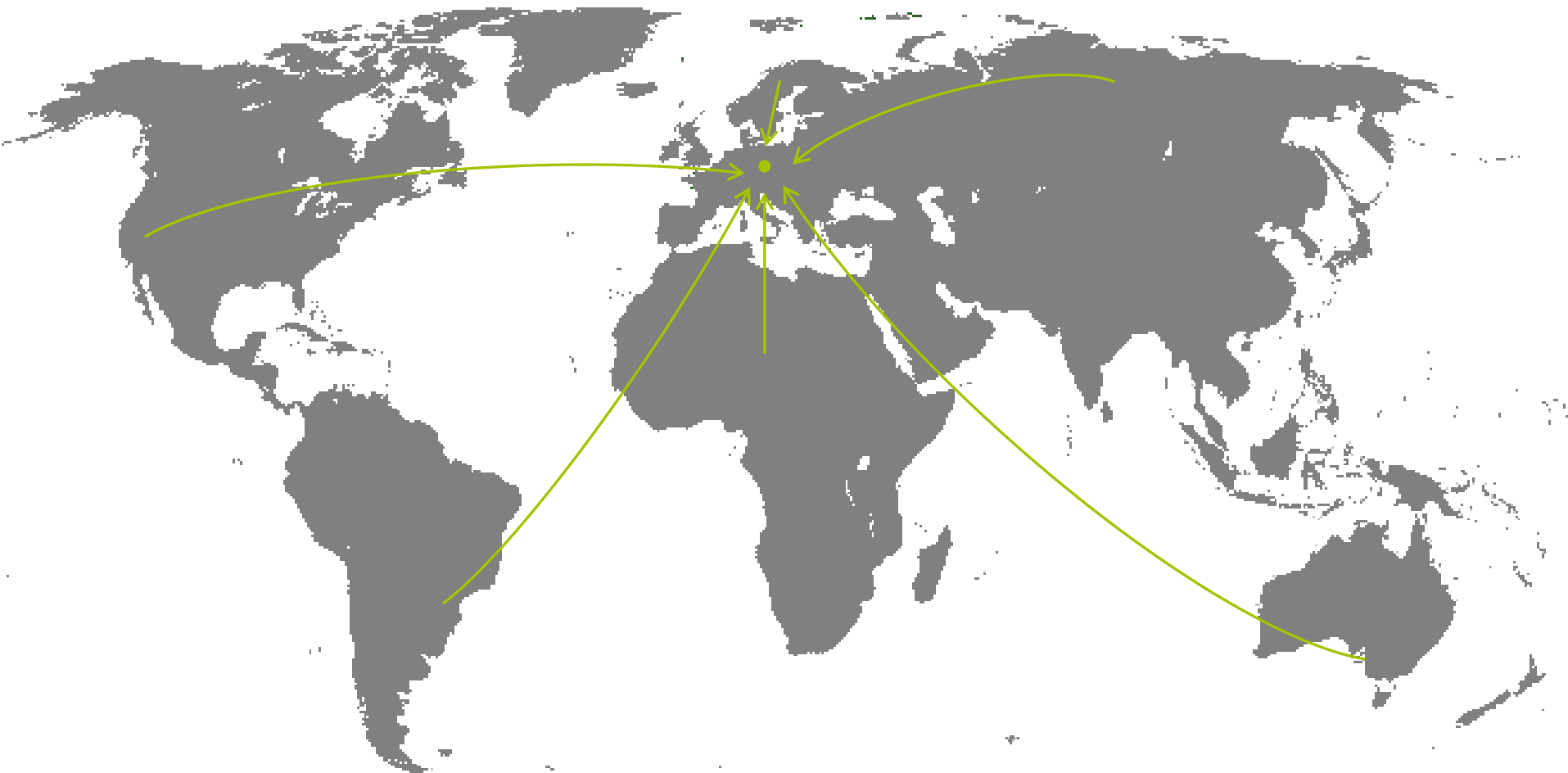
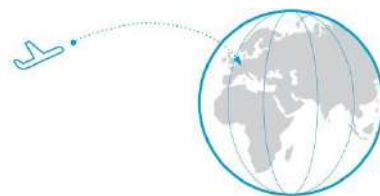
## PH.D. PROGRAMS

- Dependable Systems
- Heritage Studies
- Environmental and Resource Management

Further information about the respective study courses can be found online at:

<https://www.b-tu.de/en/study/study-programmes>

## SEMESTER ABROAD





- **Contents:**
  - Full-academic-year German language intensive course
  - Course-accompanying tutorials to improve the participants' conversation skills
  - Subject-specific (propaedeutic) prep classes
  - Intercultural activities, field trips and excursions
- **Requirements:**
  - German language proficiency on at least B1 level (pursuant to the Common European Framework of Reference for Languages, CEFR)
  - Higher education entrance qualification



24%

INTERNATIONAL  
STUDENTS

8.000

STUDENTS



21

INTERNATIONAL  
COURSES



1916,6

HOURS OF SUNSHINE PER YEAR

☀ WHY STUDY AT  
BTU?

## EXCELLENT TEACHING & OUTSTANDING RESEARCH

- Students receive excellent support from their professors and teachers
- Level of teaching is high-quality and practice-oriented → prepares students for the best job opportunities both nationally and internationally
- Research-intensive university with a strong practical orientation





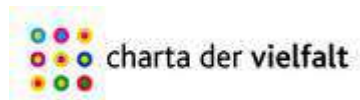
# COMPREHENSIVE RANGE OF STUDY PROGRAMS & INDIVIDUAL CAREER PLANNING

- Design your individual academic path  
→ university or applied science study program
- English-speaking programs
- Multitude of bilingual and bi-national programs, as well as close cooperation with partners such as Rolls Royce



# EQUAL OPPORTUNITIES

2011 BTU signed the “Diversity Charter” → all students and employees are valued equally, irrespective of their gender, nationality, ethnic origin, religion or ideology, handicap, age, sexual orientation or identity



# STATE OF THE ART FACILITIES

- Modern scientific facilities and laboratories
- Information, Communication and Media Centre (ICMC)



Internationalization strategy includes objectives:

- Strategic partnerships
- Geographic orientation
- **Internationalization of study programs and teaching**
- International research, especially the promotion of young talent
- International mobility of BTU members and relatives





## EXTENSIVE NETWORK

- Cooperations with non-university research institutions, partner universities, large industrial partners, as well as small and medium-sized enterprises
- Joint/coordinated appointments, collaborative projects or business cooperation within the framework of technology transfer
- 160 partner universities in 53 different countries



## OUTSTANDING STAFF-STUDENT RATIO

- Approx. 8.000 students
- 197 professors  
(including guest professors  
and junior professors)
- 629 academic staff members
- Relaxed seminar atmosphere
- Regular input from guest lecturers



## CHARMING SMALL CAMPUS ATMOSPHERE

- Small university
- Three campus locations:  
Cottbus, Cottbus-Sachsendorf,  
and Senftenberg
- Short distance between our  
campuses allows for ease of  
study and transportation  
→ no commuting: Your time is valuable!



## INEXPENSIVE COST OF LIVING

- Low cost of living in Cottbus
- Comfortable life on a student budget
- Leisure activities both in and around Cottbus are inexpensive
- Semester ticket for travelling to Berlin, Dresden or another place in the entire state of Brandenburg and Berlin for free

SEMESTER FEE (ONCE A SEMESTER)	ca. 260 €
DORMITORY RENT	165-362 €
PRIVATELY RENTED APARTMENT	170-350 €
MANDATORY HEALTH INSURANCE	ca. 90 €
GROCERIES	150-170 €
PUBLIC TRANSPORTATION WITHIN TOWN, FEDERAL STATE OF BRANDENBURG AND BERLIN IS INCLUDED IN YOUR SEMESTER TICKET	0 €
OTHER (CLOTHES, SCHOOL MATERIALS, OTHER ACTIVITIES)	200 - 300 €
500 - 700 €	



# LIFELONG LEARNING

- Concept of lifelong learning is very important
- From college to university degree to continuing education courses





„Before I started studying in Cottbus, I spent one year learning in Germany learning the language. I got to visit several universities and BTU seemed just perfect for me. This is because of the small number of students, the vast nationalities and the facilities offered by the university.“

Fath Senja, Indonesia,  
Architecture student

„BTU is a welcoming advocate of multiculturalism. It's high diversity of several students with various ethnicities has made it a truly unique and interesting place to study. It's robust and flexible system of study has not only given me real and unique benefits in my professional development, but also my development as a human being. It has improved my cultural awareness, made me professionally more creative, flexible and smarter.“

Bobbo Nfor Tansi, Cameroon,  
Ph.D. student, Chair of Environmental Planning





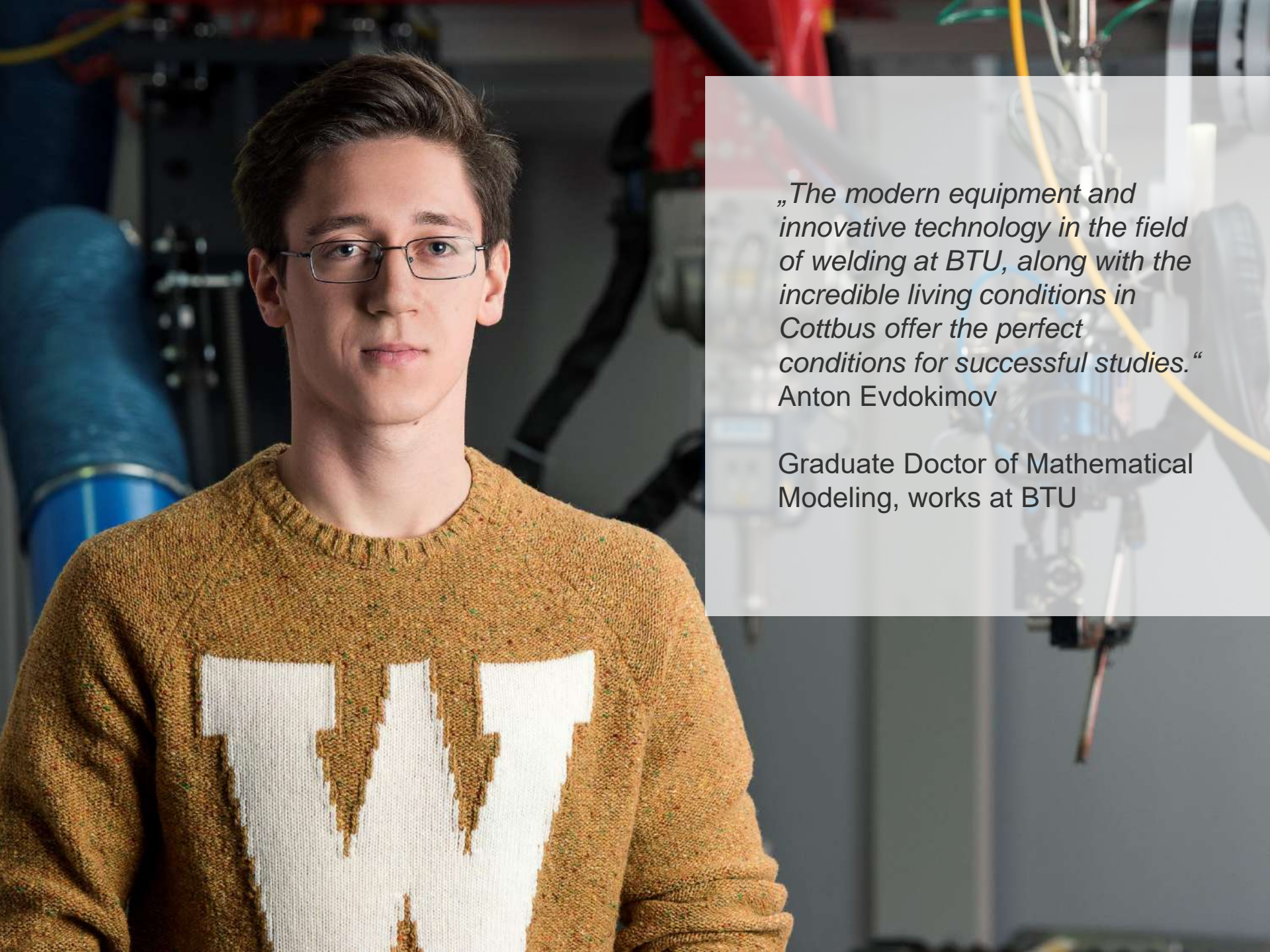
*„Despite having professional projects in Australia, Israel, the USA, and England, I decided to put down roots in Berlin Brandenburg. I've been working and living here for over 15 years. During this time I developed deep friendships and professional relationships. Here I started my family.“*

Anna Komar

Studied Business Administration and works as management consultant in Berlin





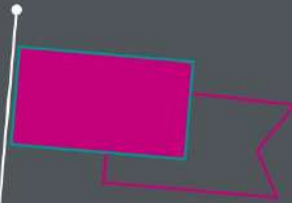


*„The modern equipment and innovative technology in the field of welding at BTU, along with the incredible living conditions in Cottbus offer the perfect conditions for successful studies.“*  
Anton Evdokimov

Graduate Doctor of Mathematical Modeling, works at BTU



START



WELCOME TO BTU!

# APPLICATION & ADMISSION

## APPLY IN 3 STEPS



For further information, take a look at: [www.b-tu.de/en/study/applications-and-admissions](http://www.b-tu.de/en/study/applications-and-admissions)

BTU COTTBUS-SENFTENBERG  
BTU COTTBUS-SENFTENBERG



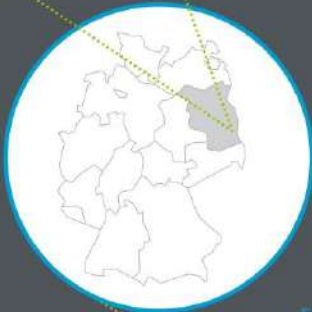
ENTFERNUNGEN  
DISTANCES

COTTBUS HBF → MAIN CAMPUS  
10 - 15 MIN

COTTBUS HBF → CAMPUS COTTBUS-SACHSENDORF  
9 MIN

SENFTENBERG HBF → CAMPUS SENFTENBERG  
10 MIN

DEUTSCHLAND - BRANDENBURG  
GERMANY - BRANDENBURG

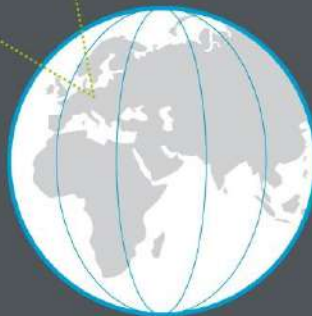


ENTFERNUNGEN  
DISTANCES

BERLIN → COTTBUS  
130 KM | 1H 20 MIN

FRANKFURT AM MAIN → COTTBUS  
590 KM | 6 H

EUROPA - DEUTSCHLAND  
EUROPE - GERMANY

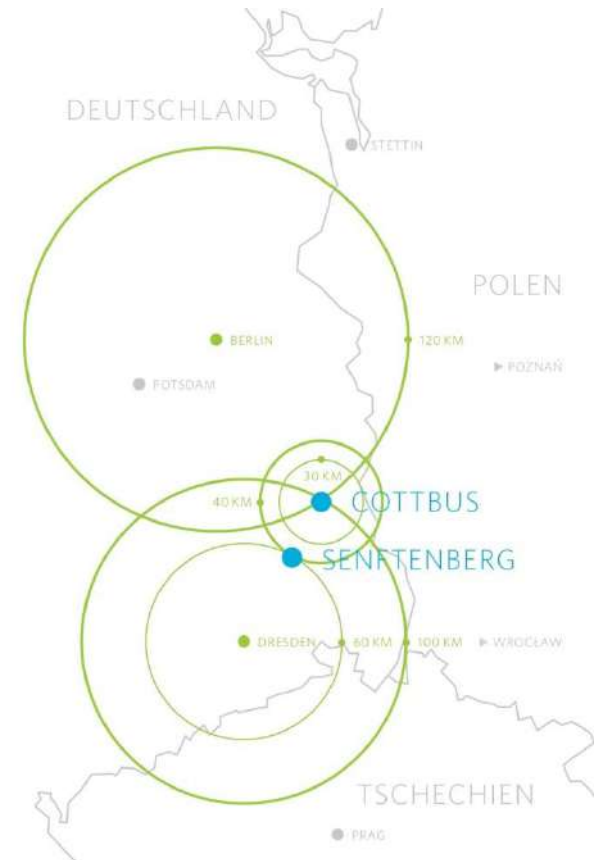


# YOUR CITY

INFORMATION ON COTTBUS

## FACTS

- Located in the north-east of Germany
- First mentioned in 1156
- Population: 100,000



## FACTS

- Beautiful landscape: Spreewald
- Slavonic minority: Sorbs / Wends
- Many bars and restaurants







## CULTURAL HIGHLIGHTS





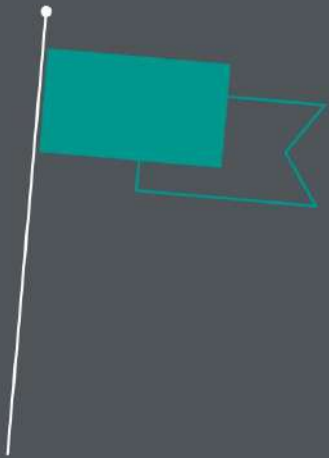
## CULTURAL HIGHLIGHTS





# HISTORIC IMPRESSIONS





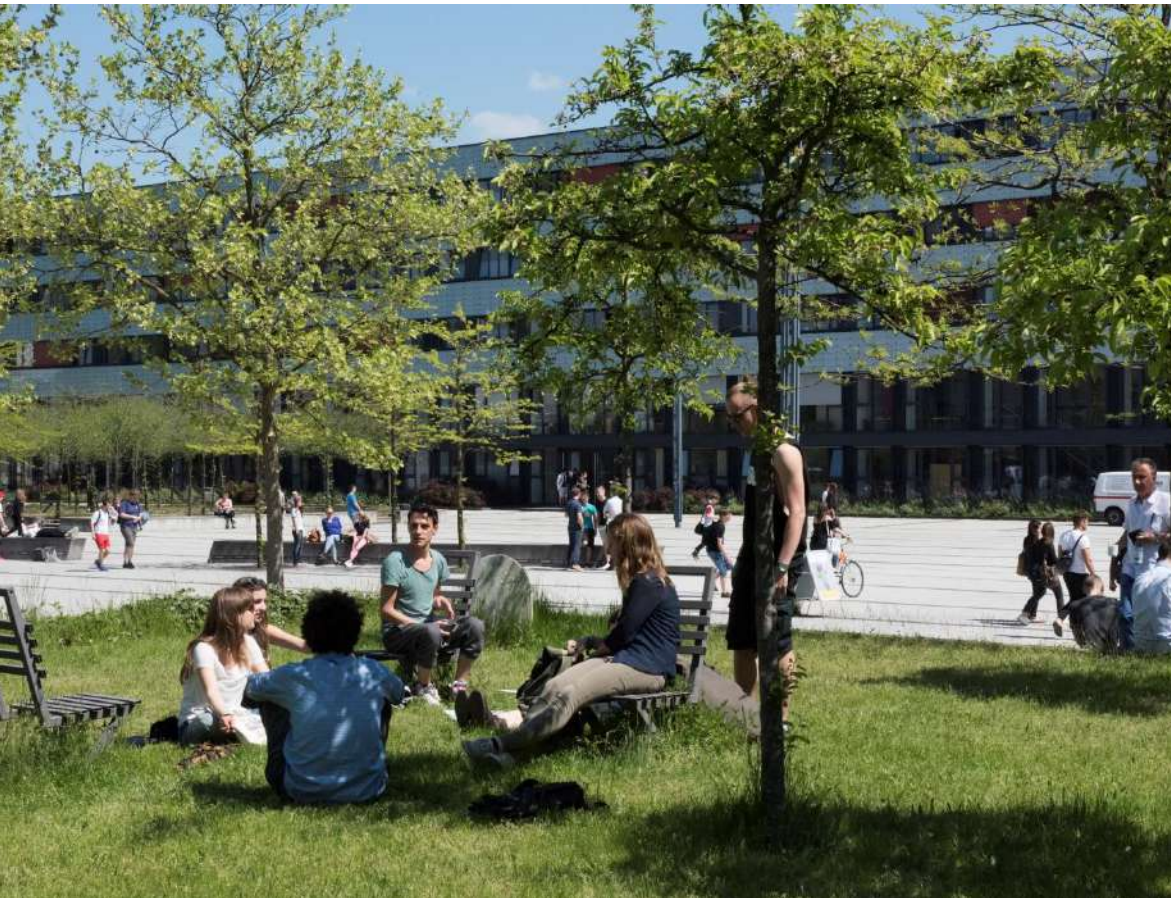
# 3 LOCATIONS

CENTRAL CAMPUS COTTBUS  
COTTBUS SACHSENDORF  
SENFTENBERG

# YOUR CAMPUS

WHERE / HOW WILL YOU STUDY?









For more impressions of Cottbus and BTU:

<https://youtu.be/GNQou3RV2KY?list=PL945322B6D94C9BB2>





APARTMENT,  
DORMS OR  
SHARED FLAT



# YOUR STUDENT EXPERIENCE

WHERE / HOW WILL YOU LIVE?

- Dorms offered close to university (through [www.studentenwerk-frankfurt.de](http://www.studentenwerk-frankfurt.de))
- Shared apartments (check out <http://www.wg-gesucht.de/en/>)





- **Welcome & Registration Point** – We support international students to settle easily into the immediate environment and to familiarize with German culture
- **OTIWO – orientation week** for German and international students
- **International Relations Office** - Organisation of orientation and intercultural preparatory programmes; **excursions** for international students and **student activities** e.g. Cottbus Open festival, theatre, cultural nights, excursions...
- **Buddy program** for international students



# FINANCING OPPORTUNITIES

- Scholarships:
  - Deutscher Akademischer Austauschdienst (DAAD)  
[Info for US-Americans](#)
  - MyStipendium ([www.mystipendium.de](http://www.mystipendium.de))
- Student jobs
- Parents' support



# SPORTS

- Large variety of sport courses for all interests
- Host for sports tournaments and university championships
- Preparation and training for sports tournaments of the »German University Sports Federation«





# IMPORTANT DATES AND DEADLINES

Dates for winter semester 2017/18

<b>Semester period</b>	01.10.17 - 31.03.18
<b>Lecture period</b>	09.10.17 - 03.02.18
<b>Holidays and days without lecture</b>	
• German Unity Day	03.10.17
• Reformation Day	31.10.17
• Christmas and New Year	25.12.17 - 06.01.18
• Good Friday	30.03.18
<b>Applications</b>	
<b>Bachelor degree programs WITHOUT admission limits</b>	
• from countries not requiring a student visa	by 31.08.17
• from countries requiring a student visa who hold a valid residence permit	by 31.08.17
• from countries requiring a student visa	by 15.07.17
<b>Bachelor and Master Degree Programmes WITH Admission Limits</b>	by 15.07.17
<b>Master degree programs</b>	
• from countries not requiring a student visa	by 31.08.17 <sup>1</sup>
• from countries requiring a student visa who hold a valid residence permit	by 31.08.17 <sup>1</sup>
• from countries requiring a student visa	by 15.07.17 <sup>1</sup>
1. for study programs Power Engineering, Urban Design, Heritage Conservation	by 01.06.17 <sup>1</sup>
<b>Preparation year „Bridge to Studies“</b>	
Foreign citizens (entrance qualification with Level B1 certificate)	by 15.07.17
<b>Prospective (INCOMING) Exchange Students (ERASMUS+, STUDEXA)</b>	by 15.07.17

Be curious. Let yourself be inspired. Be unique. You will not regret it.

**BECOME PART OF THE BTU-COMMUNITY!**



## CONTACT

### **Brandenburgische Technische Universität Cottbus - Senftenberg**

International Relations Office

Platz der Deutschen Einheit 1

03046 Cottbus

E [internationaladmission@b-tu.de](mailto:internationaladmission@b-tu.de)

I [www.b-tu.de/en/international](http://www.b-tu.de/en/international)

