

Study Mechanical Engineering (BSc) in English at one of the Top German Engineering Universities



KIT Research Centers:

- Information Technology
- Energy
- Mobility

KIT Data & Facts:

125	Institutes
9.315	Employees
847M €	Annual Budget
25.196	Students
355	Professors

Source: KIT, March 2016



Research



Education

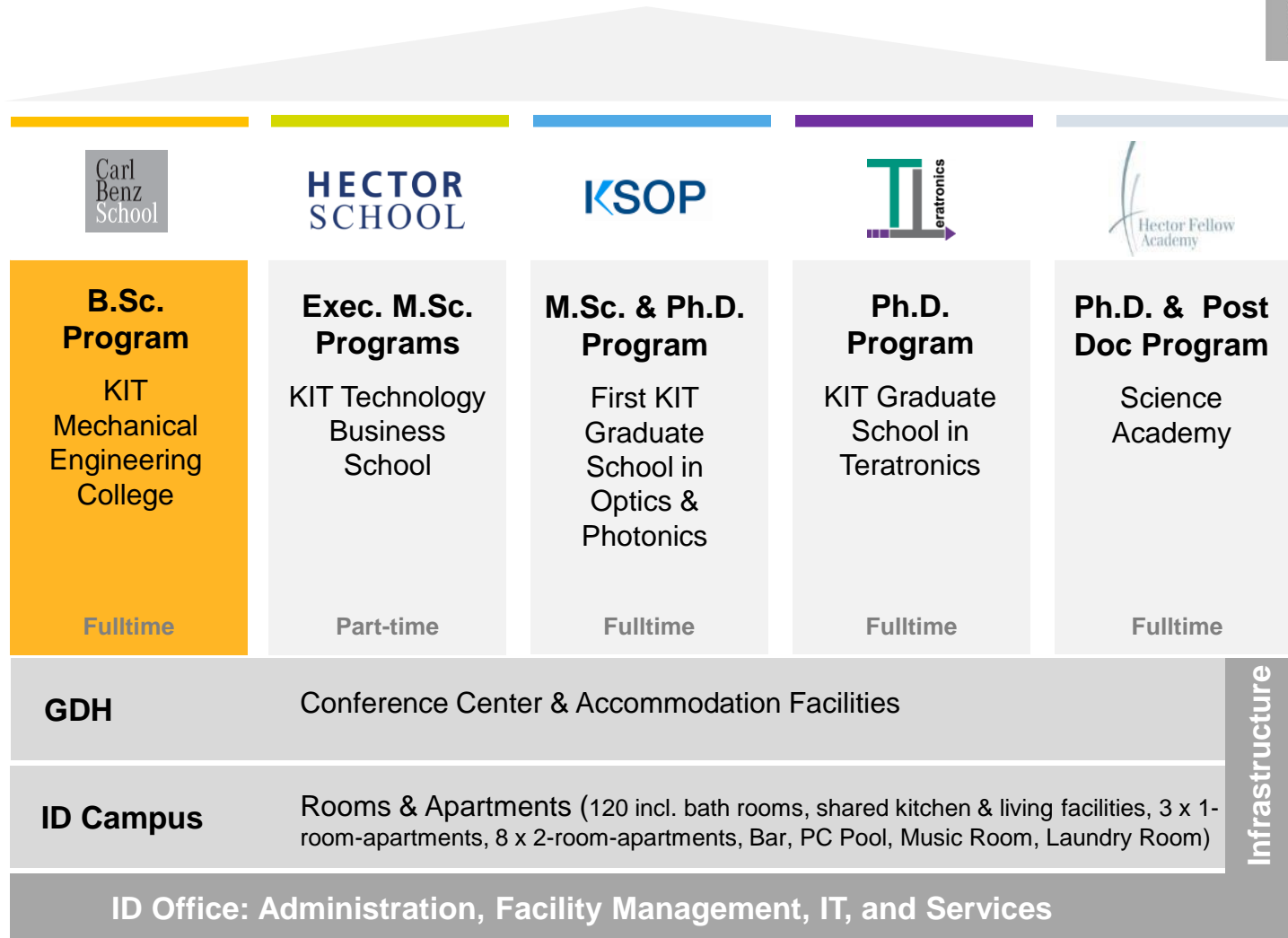


Innovation

International Department of the KIT

Portfolio & Study Programs

Carl
Benz
School



Carl Benz School of Engineering

Keyfacts & Advantages for Students

Carl
Benz
School

- English-taught Mechanical Engineering Program
 - 3 year Bachelor of Science program
 - Mechanical Engineering School of the KIT
 - Preparing for Master, PhD & industry
-
- Partner of International Higher Education (CIS, IACAC, EUC ...)
 - Talent bench for global engineers
 - Industry internship program
 - 90 % international students
 - Recognized around the globe





Why Mechanical Engineering?

- Great job opportunities
- Versatile discipline
- New emerging fields, e.g. biotechnology, materials science, nano-technology



What is Mechanical Engineering?

- One of the oldest and broadest of the engineering disciplines
- Profession requires education and skills that span a wide range of fields
- Core concepts: mechanics, kinematics, thermodynamics, materials science, structural analysis, and electricity

In which fields do mechanical engineers work?

- Design, production, logistics, research, technical sales/marketing, software engineering, product management etc.

Mandatory Engineering Sciences

SEMESTER ↓	1	<ul style="list-style-type: none">• Advanced Mathematics• Manufacturing Technologies• Computer Science in Mechanical Engineering
	2	<ul style="list-style-type: none">• Material Science• Mechanical Design• Engineering Mechanics
	3	<ul style="list-style-type: none">• Electrical Engineering and Electronics• Advanced Engineering Mechanics
	4	<ul style="list-style-type: none">• Advanced Mechanical Design• Technical Thermodynamics and Heat Transfer• Production Operations Management
	5	<ul style="list-style-type: none">• Wave Phenomena in Physics
	6	

Specials

Basic Industrial Internship

Language Courses

Soft Skill Courses

The Program in Mechanical Engineering

Specialization in one of the following Majors + Bachelor Thesis

SEMESTER

5



Automotive Engineering

Vehicle Comfort and Acoustics |
Electrical Machines | Machine
Dynamics

6



Global Production Management

Industrial Engineering | Virtual
Engineering | Manufacturing
Technology | Handling & Logistic
Systems



Energy Engineering

Technical Combustion | Heat
and Mass Transfer |
Fundamentals of the Energy
Technology | Energy Economics

Mandatory Lessons, e.g.

- Machines & Processes
- Fluid Mechanics

Industrial Internship

Supplementary Courses, e.g.

- Professional Application
- Methods in Management & Leadership

Bachelor of Science
(B.Sc.) of the KIT

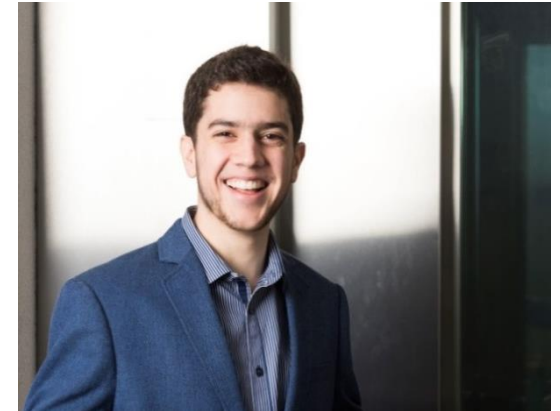
- Topic: Smart Factory, Industry 4.0
- Practical phase at **Daimler**, **Bosch** or **Carl Zeiss**
- Chance of a subsequent bachelor thesis with the company
- **Integrated Industry Unit “Smart Factory@Industry”**
 - Combination of regular lectures with on-the-job training at the innovation labs of Daimler, Bosch or Carl Zeiss
 - Students get the chance to design complex production systems together with experts



Admission requirements

CBS is the right choice if...

- ... you have advanced skills in **Mathematics & Physics**
- ... you have a passion for **Engineering**
- ... you want to study in **English** language
- ... you think **globally** or bring an international spirit
- ... you have a desire for an **international career**



How to get into the program

Admission Requirements

Carl Benz School of Engineering	Maschinenbau-Program at the KIT
Language: English only	Language: German only – B1/C1 required
Size of class: ≤ 50 students	Size of class: 600 students in the first semester
English-speaking Student Office	German-speaking 'Studienbüro'
Own on-campus-accommodation	Rare accommodation availabilities
Individualized mentoring & career counseling	No individualized mentoring
Participation in all lectures, activities and offers of the KIT	No participation in the English-speaking programs of Carl Benz School
Admission: Based on High School grades & further qualifications will increase chances of being admitted to the program	Admission: Based on High School grades only

Your unique chance
Find us in Germany

Carl
Benz
School



And now: Find Karlsruhe

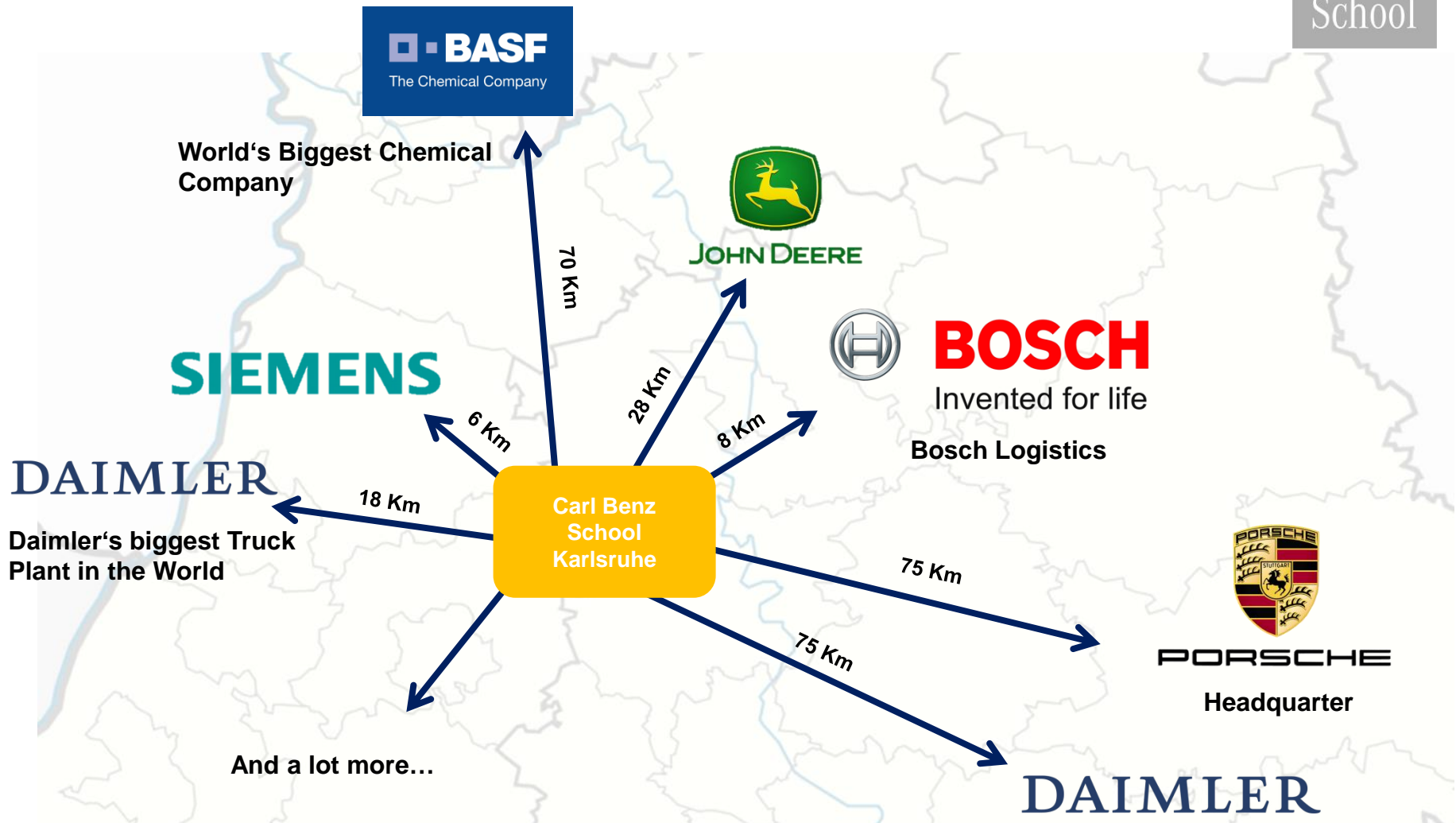
Carl
Benz
School



Technology region Karlsruhe

Window of Opportunities

Carl
Benz
School



Why to choose the Carl Benz School?

From a Company's Perspective

Carl
Benz
School

- Combination of excellent apprenticeship of the KIT and individual and practice-oriented career preparation → ideal preparation for today's labor market
- Courses are held by lecturers of the Karlsruhe Institute of Technology (KIT) → outstanding quality standards of trainings are ensured
- Quality is testified by the international reputation of the KIT and its performance in numerous rankings

QS Ranking 2016

#4

Germany

#37

Europe

#98

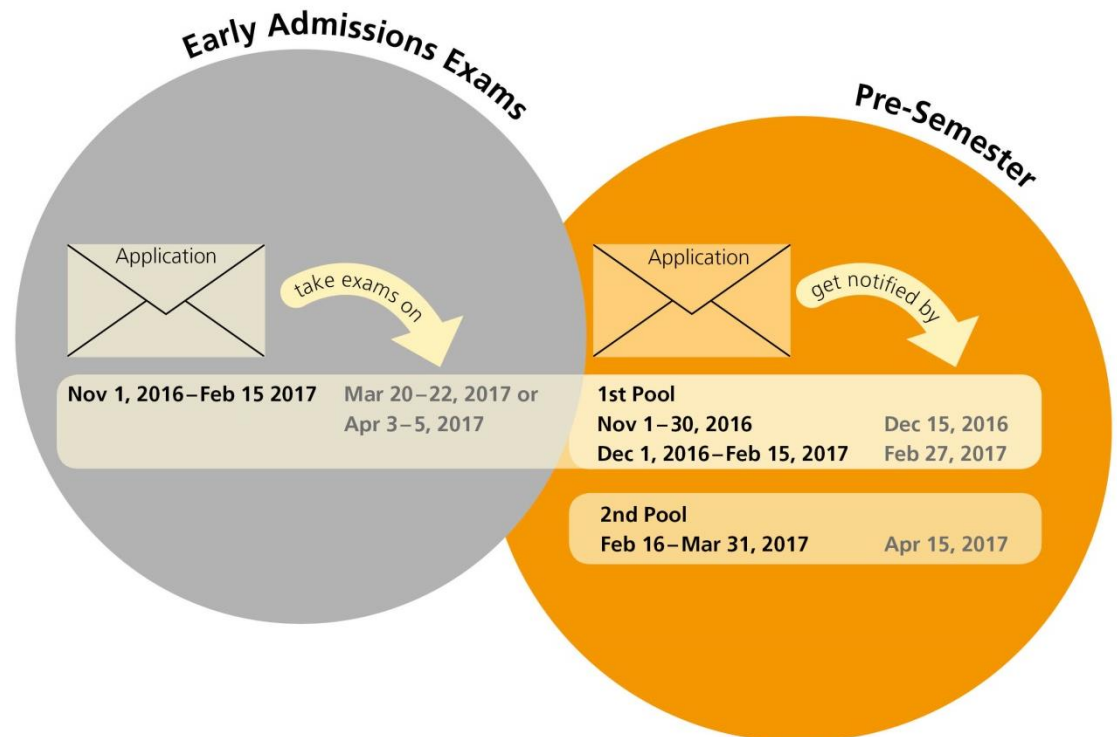
World



Admission Process – Two Options

What is the Pre-Semester

- Preparatory courses on Mathematics, Physics, Chemistry & English
- Duration: August - October
- Entry exams at the end of Pre-Semester
- + excursions, team building workshops etc.



Excellent grades in Mathematics, Physics & Chemistry?

The Early Admissions Exams could be your best option

Carl
Benz
School

- Four exams in three days
- You get all material for preparation
- Direct admission
- Participation in Pre-Semester not necessary
- Notification by mid-April

Next dates:

March 20 - 22, 2017

April 03 - 05, 2017



Early Admission Exams: Your Fast Track Enrollment

You want to apply for the Mechanical Engineering Bachelor Program at the Carl Benz School of Engineering? Since 2015, we offer **direct admission** by successfully participating in the Early Admission Exams. The exams are provided as an alternative to our so-called Pre-Semester in case you are already proficient in higher level Mathematics, Physics and Chemistry. **Your advantage** is obvious: You already know by May if you will be part of the new intake and the CBS community! Tick „Early Admission Exams“ in our application form/portal (coming soon).

Quick Facts

- Date: March 21 - 23, 2016
- Application deadline:
 - November 1 - 30 (notification by December 15, 2015)
 - December 1 - February 15 (notification by February 20, 2016)
- Exams in Mathematics, Physics & Chemistry
- TOEFL min. 95 iBT (IELTS 6,5)
- Lecture notes are provided for preparation
- Location: Karlsruhe Institute of Technology/Carl Benz School Campus
- Exam Fee: € 330
- Optional Campus Tour



Dr. Birgitta Kappes
Director Admissions Office

Phone +49 721 608-47880
E-Mail admissions-CBS@idschools.kit.edu

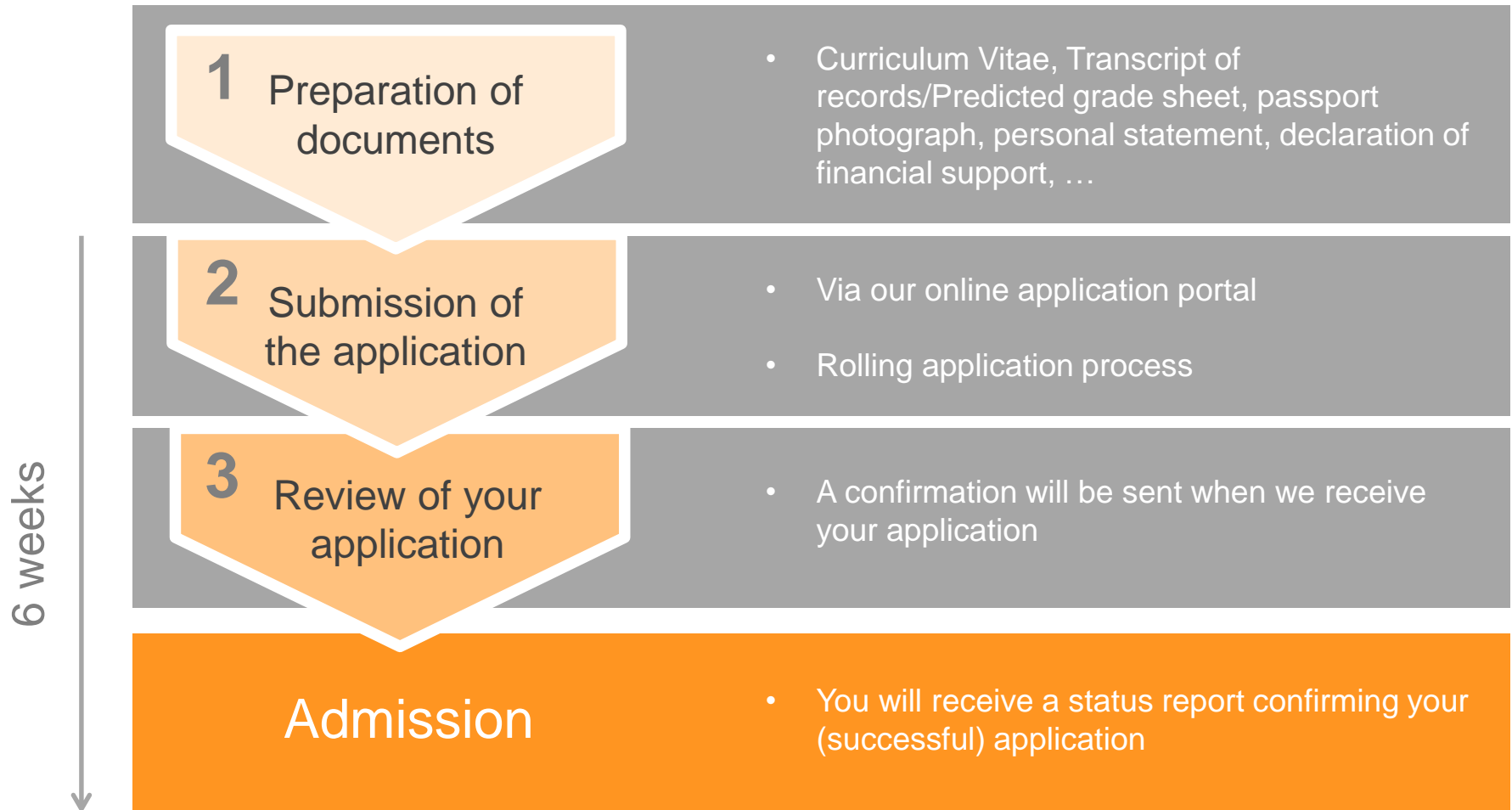
Carl Benz School of Engineering
Mechanical Engineering College of the
Karlsruhe Institute of Technology (KIT)

Schlossplatz 19 | 76131 Karlsruhe
Germany

How to get into the program

Admission Requirements

Requirements	Minimum
High school education	
International Baccalaureate	- 35 Points
A-Levels	- 82%
Abitur	- 2,3
U.S. High School Diploma	- GPA of 3.5
SAT (Math & Evidenced-based Reading and Writing)	- 1,200 (new SAT)
Subject knowledge & understanding	
Mathematics, Physics	1. Higher/Advanced Level
Additional science (Chemistry preferred)	2. Excellent grades (e.g. 6/7 (IB), A*/A (A-Levels))
	3. Taught during the last 2 years
English language	
Mother tongue	no test needed
Language of instruction for the past 5 years	no test needed
TOEFL	- 570 pb // 240 cb // 95 iBT
IELTS	- Band score of 6.5
TOEIC	- Score of 880



The Mechanical Engineering Program

Carl
Benz
School

Facts & Figures

Program	Mechanical Engineering (International)
Degree	Bachelor of Science of the Karlsruhe Institute of Technology (KIT)
Duration	3 years
Language of Instruction	English
Location	Germany
Admission Requirements	Preferably IB, A-levels, US High School Diploma or similar
Accommodation	On-campus housing
Program Costs	€330 Early Admission Exams and/or €4.500 Pre-Semester €7.000/Semester – tuition fees + Living expenses

CBS Summer School

A Glance into Mechanical Engineering

Carl
Benz
School

For technically-inclined high school students
in their last two years of secondary education.



Next dates:
2 x 1 week in
June/July 2017



- Introduction to the engineering studies
- Workshops
- Visits to institutes of the KIT and engineering companies
- Interesting and entertaining leisure activities



Truth? Let's hear their point of view

Voices of two CBS students

Carl
Benz
School



"I decided to study Mechanical Engineering because I want to discover and innovate mechanical solutions to industrial problems."

"I like the fact that it's a more tangible application of maths and science."



Alex Rohregger

Italy

*Frankfurt International School, Frankfurt
(Germany)*

Intake 2014

Isha Gandhi

India

*William P. Clemens High School,
Sugar Land, Texas (USA)*

Intake 2013



Yaxian Liu
International
Recruitment
Carl Benz School

yaxian.liu@kit.edu



Carl
Benz
School



Carl Benz School of Engineering

Übersicht Videos Playlists Kanäle Diskussion Kanalinfo

Alle Aktivitäten



Carl Benz School of Engineering hat ein Video hochgeladen. vor 2 Monaten



Umair Ahmad - Alumnus of the Carl Benz School of Engineering (CBS)

von Carl Benz School of Engineering
vor 2 Monaten • 70 Aufrufe

Umair did his Bachelor at the Carl Benz School of Engineering and switched to the "German side" - the Karlsruhe Institute of Technology (KIT) for his Master. Now he is employed as a ...

You Tube

www.carlbenzschooll.de